



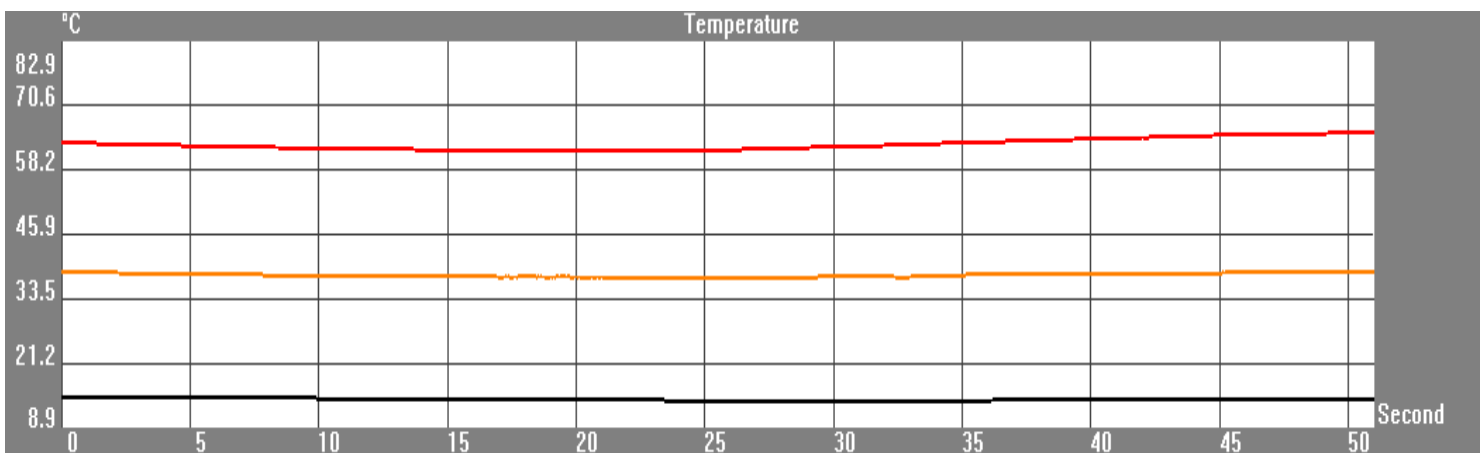
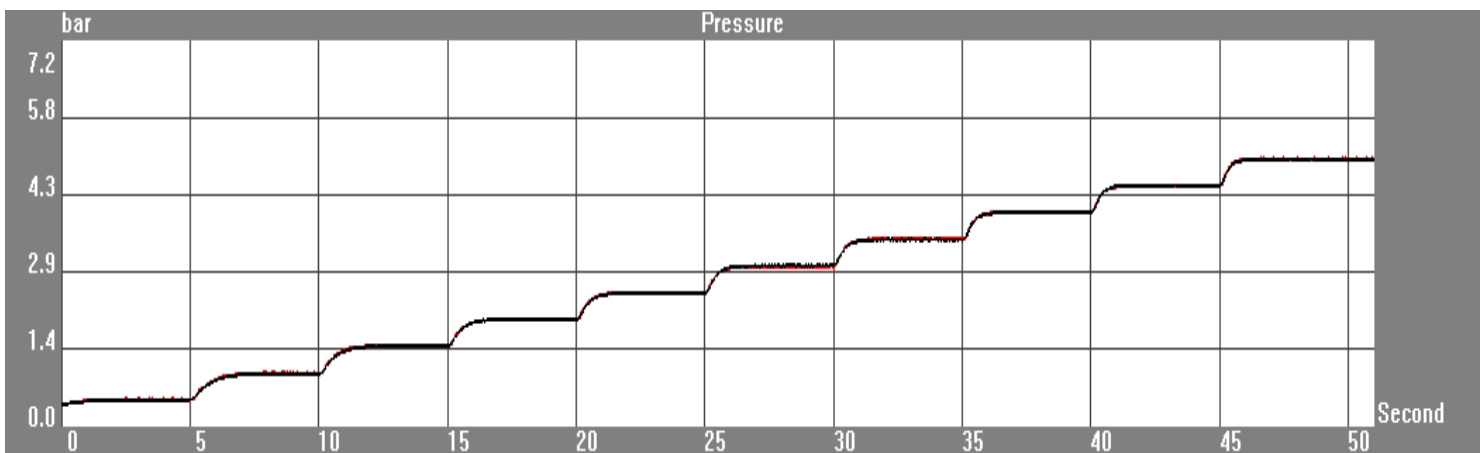
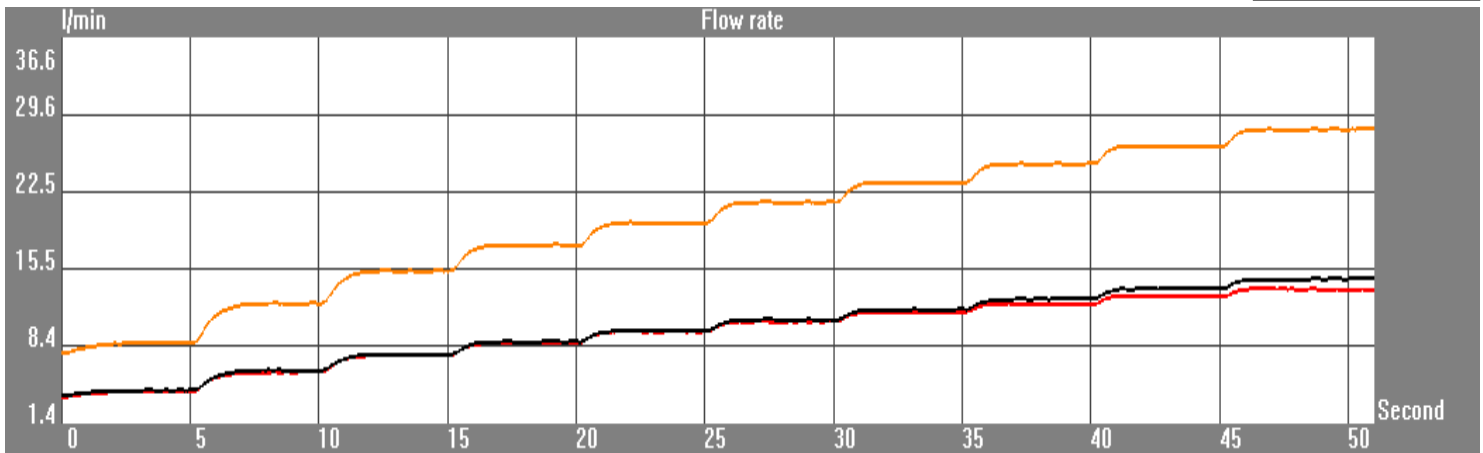
# STEP FLOW RATE REPORT

PAFFONI RUBINETTERIA SPA - VIA SORISO 2, 28076 POGNO NO, ITALY

## Component data

Client :	Paffoni	Model :	MDBOX000
Category :	Termostatico	Serial number :	201124
Line :	MODULAR	Test description :	Portata_uscita-A

Station 1



Start date :	24/11/2020 - 14.35	Operator :	Ufficio Tecnico
Test duration :	51 (Second)	Signature :	_____

# STEP FLOW RATE REPORT



PAFFONI RUBINETTERIA SPA - VIA SORISO 2, 28076 POGNO NO, ITALY

## Component data

Client :	Paffoni	Model :	MDBOX000
Category :	Termostatico	Serial number :	201124
Line :	MODULAR	Test description :	Portata_uscita-A

## Test settings:

**Station 1**

Starting pressure:	0,50 bar	<input checked="" type="checkbox"/> Open hot
Step:	0,50 bar	<input type="checkbox"/> Open by-pass
Stabilisation time:	5 "	<input checked="" type="checkbox"/> Open cold
Steps number:	10	

Pitch	Hot pressure (bar)	Cold pressure (bar)	Hot flow rate (l/min)	Cold flow rate (l/min)	Mixed flow rate (l/min)	Mixed temperature (°C)
1	0,51	0,51	4,27	4,43	8,70	38,26
2	1,00	1,00	6,10	6,24	12,35	37,96
3	1,51	1,51	7,59	7,72	15,31	37,89
4	2,01	2,01	8,77	8,87	17,65	37,74
5	2,51	2,50	9,79	9,89	19,68	37,59
6	3,00	3,01	10,71	10,88	21,59	37,81
7	3,51	3,49	11,59	11,83	23,42	38,09
8	4,01	4,00	12,32	12,83	25,15	38,30
9	4,50	4,51	12,97	13,72	26,69	38,45
10	5,00	4,99	13,61	14,57	28,18	38,60

Notes: Uscita acqua mix 100%  
Utilizzato uscita A

Start date : 24/11/2020 - 14.35

Operator : Ufficio Tecnico

Test duration : 51 (Second)

Signature : \_\_\_\_\_