

STEP FLOW RATE REPORT

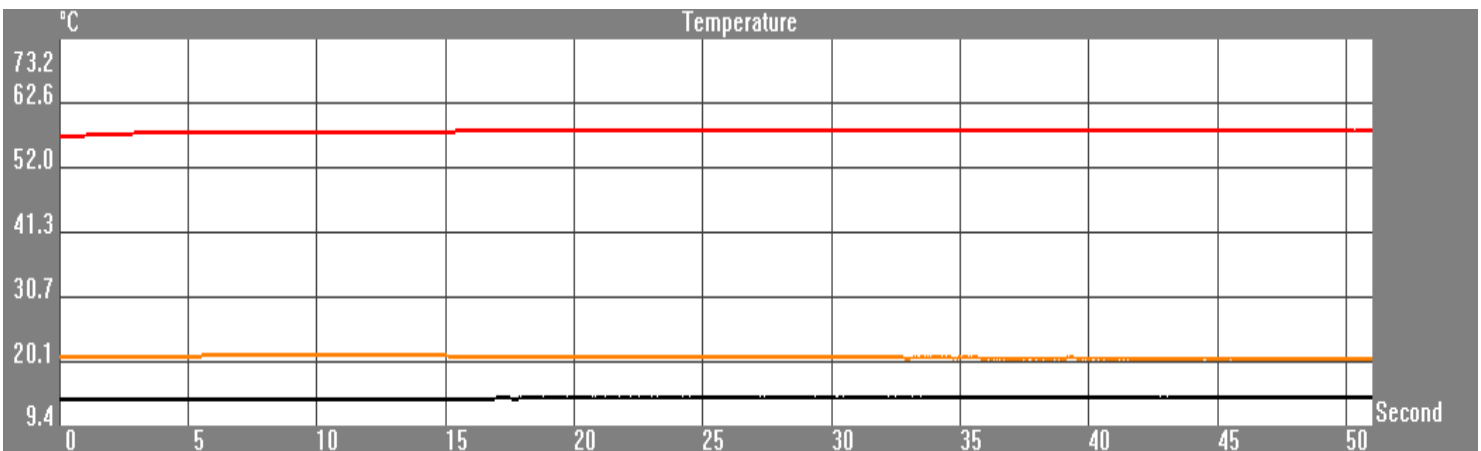
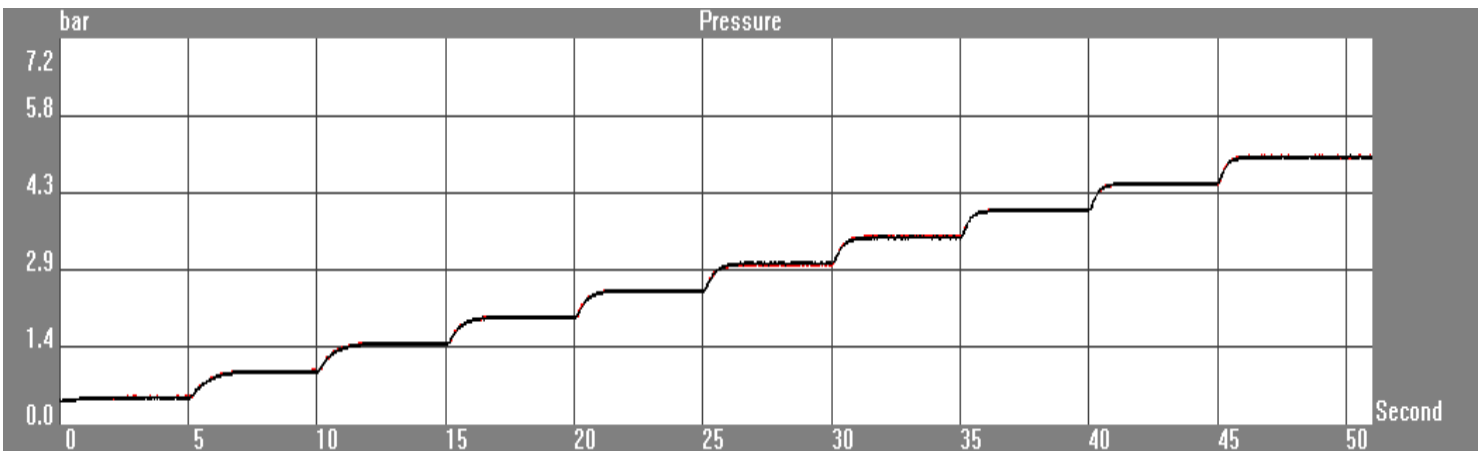
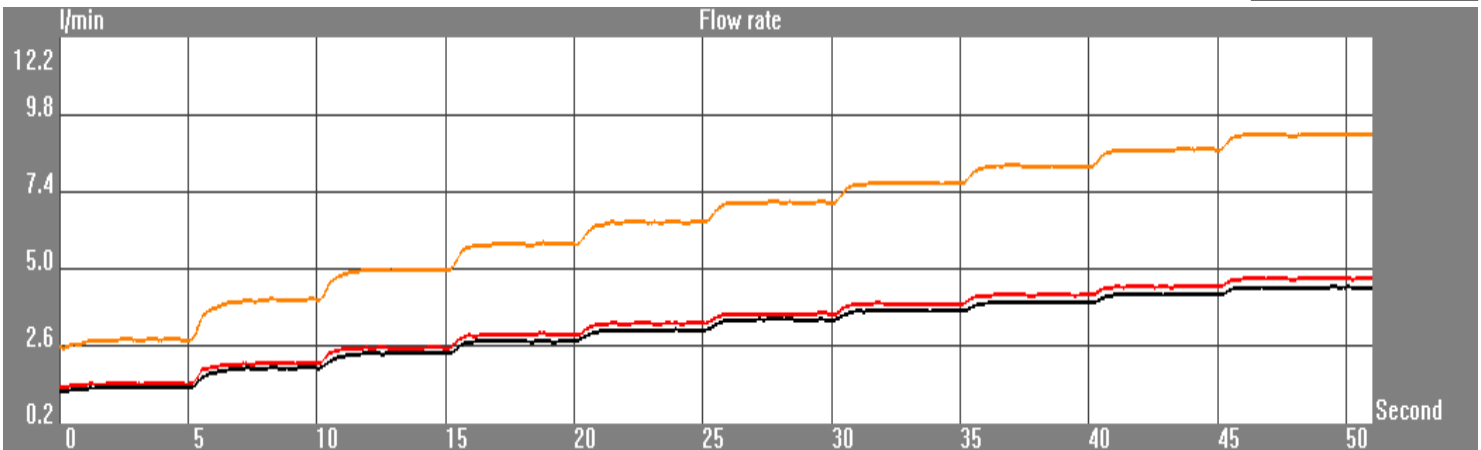


PAFFONI RUBINETTERIA SPA - VIA SORISO 2, 28076 POGNO NO, ITALY

Component data

Client :	Paffoni	Model :	JO075CR
Category :	Miscelatore	Serial number :	120210
Line :	JO	Test description :	Portata

Station 1



Start date : 10/02/2021 - 15.11

Operator : Ufficio Tecnico

Test duration : 51 (Second)

Signature : _____

STEP FLOW RATE REPORT



PAFFONI RUBINETTERIA SPA - VIA SORISO 2, 28076 POGNO NO, ITALY

Component data

Client :	Paffoni	Model :	JO075CR
Category :	Miscelatore	Serial number :	120210
Line :	JO	Test description :	Portata

Test settings:

Station 1

Starting pressure:	0,50 bar	<input checked="" type="checkbox"/> Open hot
Step:	0,50 bar	<input type="checkbox"/> Open by-pass
Stabilisation time:	5 "	<input checked="" type="checkbox"/> Open cold
Steps number:	10	

Pitch	Hot pressure (bar)	Cold pressure (bar)	Hot flow rate (l/min)	Cold flow rate (l/min)	Mixed flow rate (l/min)	Mixed temperature (°C)
1	0,51	0,51	1,46	1,35	2,81	20,94
2	1,00	1,00	2,12	1,97	4,09	21,08
3	1,51	1,50	2,58	2,42	5,00	20,97
4	2,00	2,00	2,98	2,81	5,80	20,77
5	2,51	2,50	3,35	3,14	6,49	20,76
6	3,00	3,01	3,64	3,43	7,07	20,75
7	3,50	3,49	3,96	3,73	7,69	20,63
8	4,01	4,00	4,23	3,98	8,21	20,62
9	4,49	4,50	4,50	4,24	8,74	20,61
10	5,01	4,99	4,74	4,47	9,21	20,61

Notes: Uscita acqua mix 100%
Utilizzato componenti standard

Start date : 10/02/2021 - 15.11

Operator : Ufficio Tecnico

Test duration : 51 (Second)

Signature : _____