



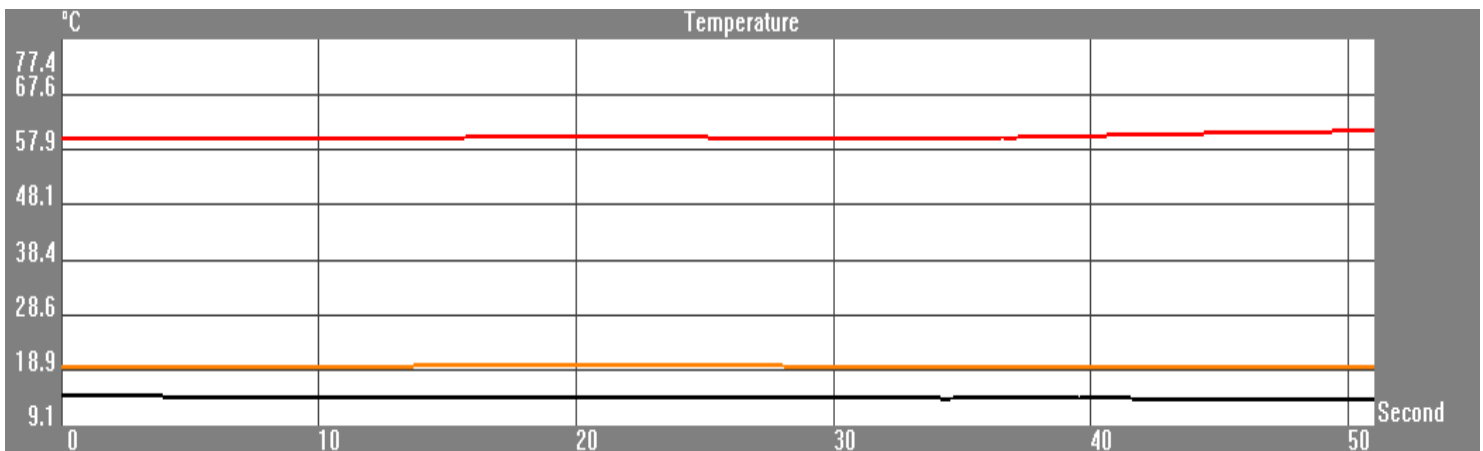
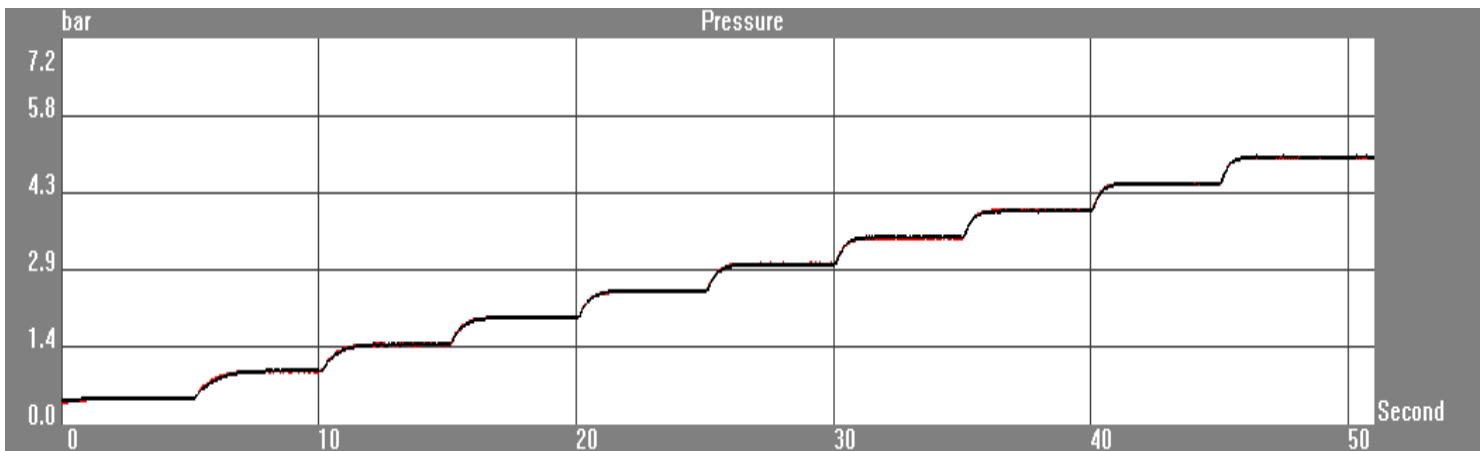
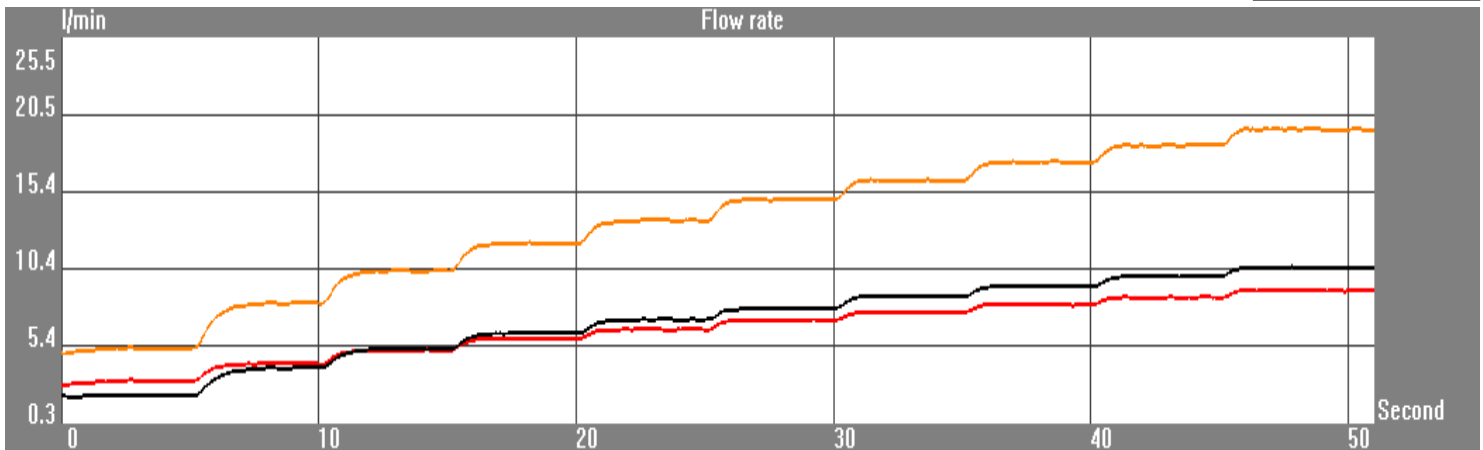
STEP FLOW RATE REPORT

PAFFONI RUBINETTERIA SPA - VIA SORISO 2, 28076 POGNO NO, ITALY

Component data

Client :	Paffoni	Model :	EVO078
Category :	Miscelatore	Serial number :	131218
Line :	EVO	Test description :	Portata_gradini

Station 1



Start date : 18/12/2013 - 08.55

Operator : Ufficio Tecnico Paffoni

Test duration : 51 (Second)

Signature : _____

STEP FLOW RATE REPORT



PAFFONI RUBINETTERIA SPA - VIA SORISO 2, 28076 POGNO NO, ITALY

Component data

Client :	Paffoni	Model :	EVO078
Category :	Miscelatore	Serial number :	131218
Line :	EVO	Test description :	Portata_gradini

Test settings:

Station 1

Starting pressure:	0,50 bar	<input checked="" type="checkbox"/> Open hot
Step:	0,50 bar	<input type="checkbox"/> Open by-pass
Stabilisation time:	5 "	<input checked="" type="checkbox"/> Open cold
Steps number:	10	

Pitch	Hot pressure (bar)	Cold pressure (bar)	Hot flow rate (l/min)	Cold flow rate (l/min)	Mixed flow rate (l/min)	Mixed temperature (°C)
1	0,50	0,49	3,13	2,12	5,24	19,63
2	1,00	1,00	4,21	3,96	8,17	19,64
3	1,49	1,50	5,09	5,19	10,28	19,78
4	2,00	2,01	5,88	6,22	12,10	19,78
5	2,50	2,51	6,45	7,10	13,55	19,77
6	3,01	3,00	7,06	7,88	14,94	19,63
7	3,49	3,50	7,57	8,61	16,18	19,64
8	4,00	4,00	8,12	9,27	17,39	19,63
9	4,50	4,51	8,55	9,95	18,50	19,64
10	4,99	5,00	8,95	10,51	19,46	19,63

Notes: Uscita acqua mix 100%

Start date : 18/12/2013 - 08.55

Operator : Ufficio Tecnico Paffoni

Test duration : 51 (Second)

Signature : _____